



A3 Colour Multifunction Printer  
Apeos C7071 / C6571 / C5571 / C4571



# Embark on your digital transformation journey

Designed to accelerate your digital transformation (DX) journey, new Apeos series with its smart and seamless integration features present itself as a trusted digital partner.



# Uncompromising productivity to optimise your digital journey



## Apeos C7071 / C6571 / C5571 / C4571

### Designing Simplicity

Designed for all, our devices deliver ease of use, accessibility and personalisation feature for a true intuitive experience.

### Offering Scalability

Discover greater freedom and operational flexibility, with seamless integration of cloud and mobile solutions.

### Creating Environmental Sensitivity

Driving organisation awareness towards creating a low impact environment with advance features such as low melting point (low energy) toner technology, smart power-saving sensors or staple-free finishing.

#### Apeos C7071

Colour/Monochrome  
**70 ppm\***

#### Apeos C6571

Colour/Monochrome  
**65 ppm\***

#### Apeos C5571

Colour/Monochrome  
**55 ppm\***

#### Apeos C4571

Colour/Monochrome  
**45 ppm\***

\* A4 LEF

## Quick and Simple operability

### Quick startup and output for greater efficiency

Smart WelcomEyes detects the user and automatically exits sleep mode. In Fast Boot Mode, the control panel is available in as little as 6 seconds. Ready to use whenever you need it.

### Quick scanning of high-volume documents

The Duplex Automatic Document Feeder C2-PC can hold up to 250 sheets of documents and read them at a high speed of up to 270 ppm\* with 1 pass 2 sided scanning for fast copying or scanning. Moreover, the double Multiple Feed Detection prevents issues such as missing information due to documents being skipped, ensuring smooth post-processing work.

Note: Only available for Model-CPS-C.

\* 1 pass 2 sided scanning using FUJIFILM standard paper (A4 LEF), 200 dpi, to Folder.



### Paper trays close lightly

Paper trays are equipped with a retraction mechanism so you can close them slowly and quietly by pushing them halfway through.



## Broader multifunction printer uses

### Creates appealing promotional materials from various types of paper sizes and materials

Supports various paper media for in-house production of promotional items such as clear document folders, post cards\*, envelopes\*, and long POP display banners.

- Supports long paper up to 320 x 1,200 mm
- Supports 52 to 300 gsm paper, from lightweight paper to heavy paper such as certificate

\* Bypass tray supports postcards and envelopes, and an optional "Envelope Tray" is available.



### High Quality clean and crisp printing

With the use of Super EA-Eco toner, fine text and lines are rendered clearly, halftone gradations are smooth, and dot shapes are accurately reproduced, contributing to high image quality.



### Print out from any connected multifunction printer within the office

With Server-less On-Demand Print\*, you have the flexibility to print and collect the print outs from any of the connected multifunction printers.

\* Optional

### Flexibility in office layout

Supports wireless LAN environment\*. Can be installed without a wired network, increasing flexibility in multifunction printer locations.

\* Optional. Print Utility, AirPrint, Mopria® Print Service, Mopria Scan are supported.

### Light notification reminder

The notification light reminds user of uncollected original or printed document on the trays.

The Centre Tray lights up to notify when a fax or other document is received on the Side Tray.



## Broader multifunction printer uses

### Creates appealing promotional materials from various types of paper sizes and materials

Supports various paper media for in-house production of promotional items such as clear document folders, post cards\*, envelopes\*, and long POP display banners.

- Supports long paper up to 320 x 1,200 mm
- Supports 52 to 300 gsm paper, from lightweight paper to heavy paper such as certificate

\* Bypass tray supports postcards and envelopes, and an optional "Envelope Tray" is available.



### For high-volume copy, print, and fax users

#### High Capacity Feeder

High Capacity Feeder B1 can feed 2,000 sheets\*.

Maximum paper capacity of 5,200 sheets\* can be loaded with Tandem Tray Module to support high volume printing needs.

\* 80 gsm paper.



High Capacity Feeder B1

#### Three-way output

Supports sorted output for copy, print, and fax jobs.

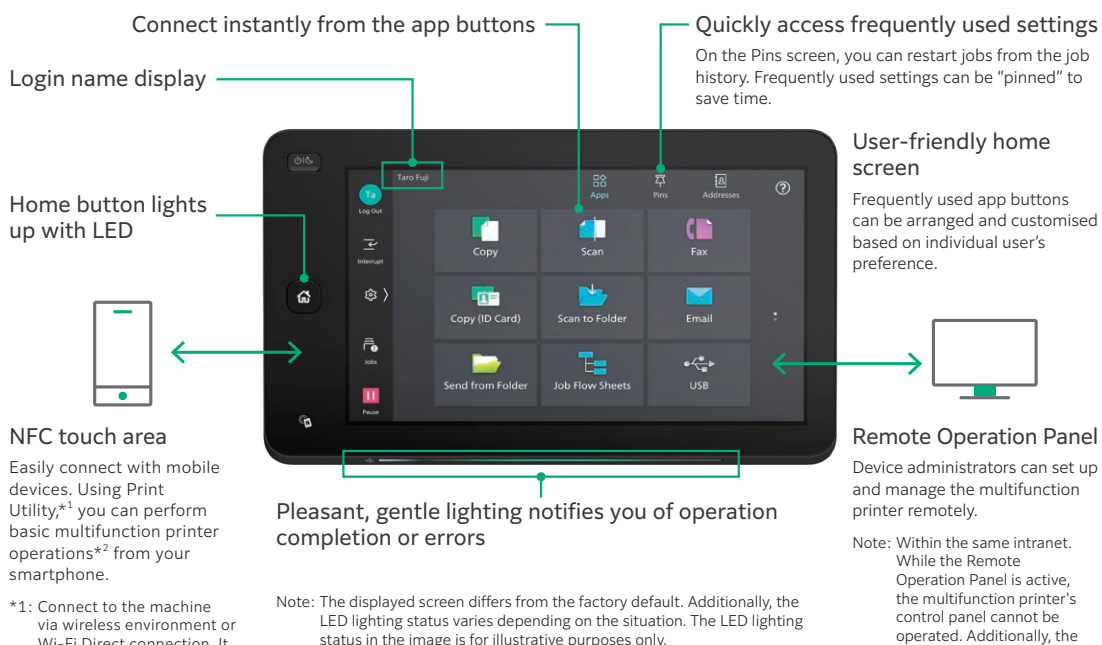




# Designed for usability, a centre machine that is ready whenever you need it

## New large-sized 10.1-inch control panel delivers intuitive user experience and personalisation

The control panel serves as the gateway, connecting you to various smart applications on the multifunction printer at the touch of your finger. The large capacitive touch panel provides excellent visibility and operability, responding to every touch and swipe for effortless navigation.



\*1: Connect to the machine via wireless environment or Wi-Fi Direct connection. It can be downloaded free of charge from Google Play™ or App Store.

\*2: Copy, fax, print, scan.

## Various features saving time and effort in scanning operation

Scanned data can be transferred through a variety of methods including e-mail, URL, and send to PC (SMB/FTP).

In addition to TIFF and JPEG, the scanned data can be converted to OCR-enabled\* or high compression/specific colour PDF or DocuWorks documents. Also they can be converted to editable Excel\*/Word\* documents.

\* Optional

## Seamless sharing and document management

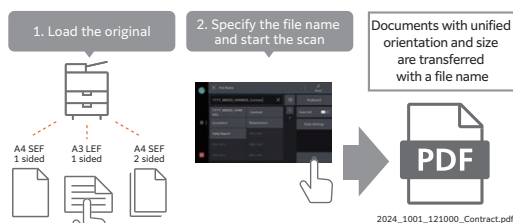
With ScanAuto, you can easily send scanned data with a touch of a button

Automatically adjusts the orientation or 1-sided/2-sided of the original document.  
Automatically selects the scan settings suitable for the document.

Features such as exclusion of blank pages and skew correction are automatically detected and applied by the multifunction printer.

File names can be assigned from presets on the UI screen to prevent scanned files from getting lost on the PC.

**Note:** The output destination can be chosen between Scanner (E-mail Transmission) and Scanner (PC Storage).



## Enhance sales capabilities by digitalising business card information

Using the Duplex Automatic Document Feeder B2-PC\*, you can scan business cards and receipt-sized documents.

- Minimum size supported: 49 x 85 mm
- Batch scanning of multiple documents supported
- Support of 1 pass, 2 sided scanning that scans both sides of a document simultaneously

**Note:** Multi-feed detection function provided

\* Only available for C5571/C4571



# Integration with enhanced solution features for more flexible ways of working

By using your multifunction printer together with FUJIFILM IWpro\*, you can output documents even outside the office.

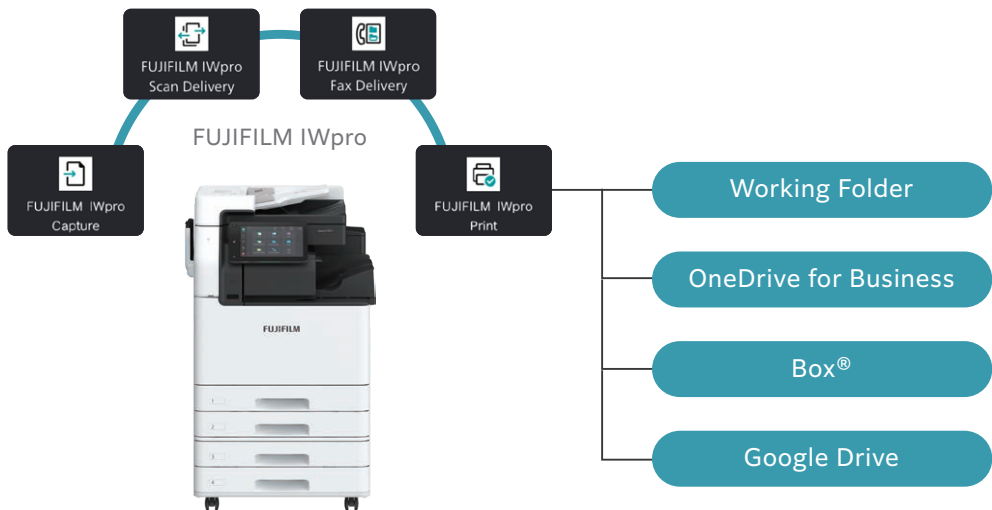
This enables a flexible work style unconstrained by location.

Automation of scanning and fax workflows, as well as integration with other companies' cloud services, makes it easier to utilize and share digitalized documents, improving your work efficiency.

\* A cloud service provided by FUJIFILM Business Innovation. A separate contract is required for this service.

## Combine your multifunction printer with cloud storage for a more efficient way of working

Cloud storage helps you achieve a more efficient way of working that is not restricted by time or location. By combining cloud storage with FUJIFILM IWpro applications available on FUJIFILM multifunction printers, you can further streamline tasks such as scanning, faxing, and printing.



### Scan

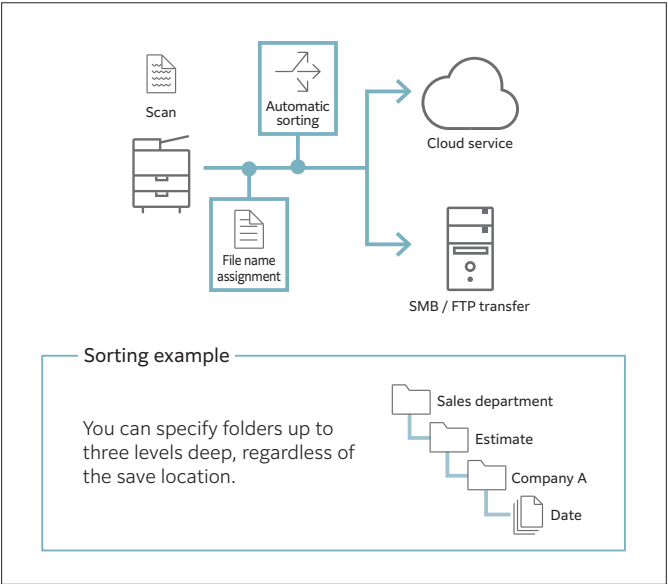
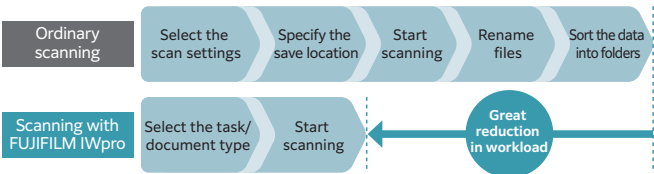
#### Uniform quality regardless of who scans saves scanning time

##### Smooth document storage and search with simple pre-settings

By setting rules in advance, scan settings, the specification of save locations and renaming of files can be completed with one touch, significantly reducing scanning time. The automated text extraction feature allows you to read information within scanned documents and assign it to folder names or file names\*. Information that used to be scattered due to differing save locations or file names depending on the person scanning can now be standardized and centrally managed. This improves searchability after saving documents and allows everyone to make use of digitalized information.

\* Optional

##### Tasks required for scanning





## Fax

### Never miss a fax, whether in the office or on the go

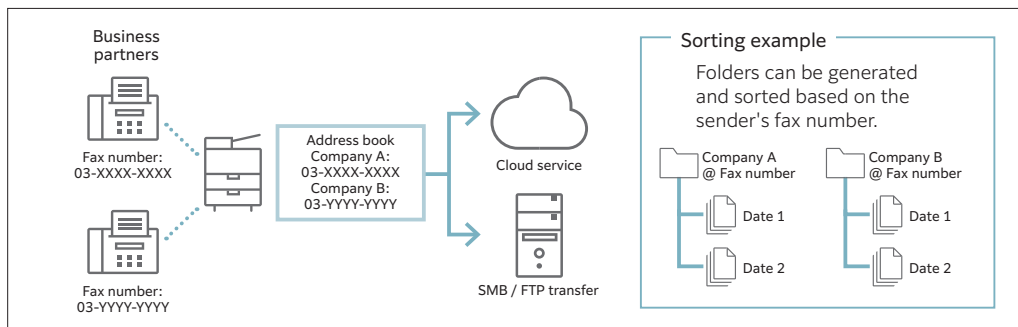
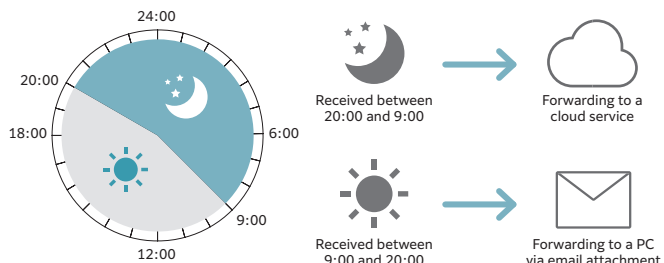
#### Check fax documents from anywhere

Received fax documents can be automatically sorted and forwarded without printing. Folders are automatically generated based on the sender's fax number, the received date, and the user linked to the sender. This eliminates the need for tedious sorting and organizing of received documents.

Operations and forwarding destinations can be switched based on the time of day or day of the week to suit your work style.

Furthermore, you will not miss important faxes sent to the office, even after working hours or while out, by receiving notifications via email or forwarding them to a cloud service.

#### Example of forwarding schedule settings



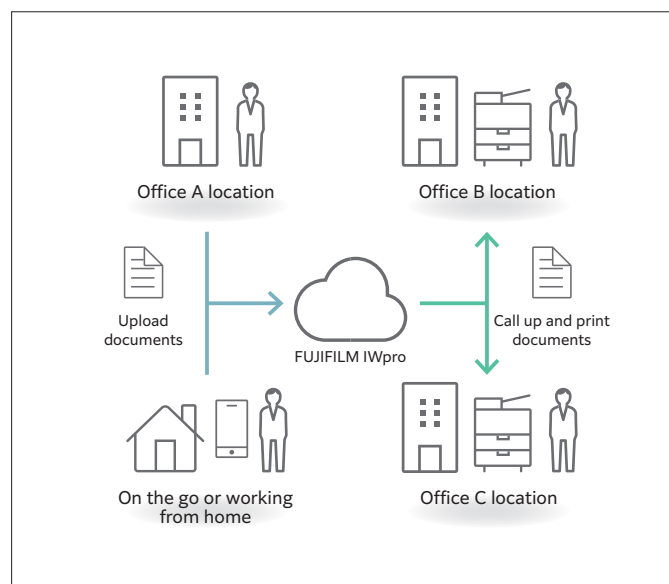
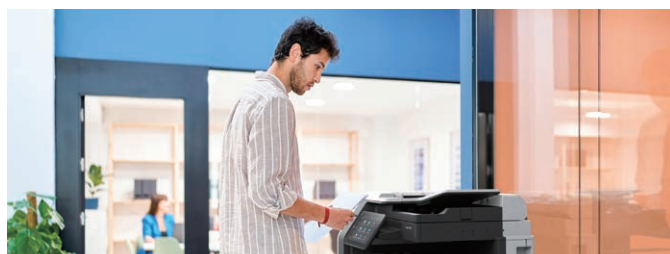
## Print

### Print easily and securely from any device, wherever you are

#### Achieve a work style unconstrained by printing environments

Documents assigned to be printed can be printed at various outside office locations. Additionally, even if you revise documents while on the move, you can issue print instructions from various mobile devices to print them.

Employees on the go can specify and print documents stored in a cloud service directly from the office multifunction printer, eliminating the need to download data to a PC. Before printing a document from a cloud service, you can use the preview feature to check the document contents, preventing print errors and ensuring smoother printing.

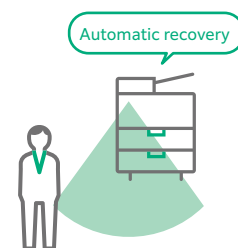




# The multifunction printers of the future

## Instant Readiness with Smart User Detection

Equipped with Smart WelcomEyes, sensors in the multifunction printer detect users and automatically deactivate sleep mode. Even when in an energy-saving sleep state, the printer is instantly ready for use, maintaining user convenience.



## Smart energy saving

The system is divided into four parts: the Document scanner, control panel, controller, and output devices, and power is supplied to only those parts that are used in accordance with the functions to reduce power consumption and CO<sub>2</sub> emissions.

## Staple-free Finisher

Supports staple-free stapling, ensuring environmental and safety benefits with waste reduction and a contamination free setup.

## Resource Optimisation

- Paper usage reduction capabilities
  - Private Charge Print, scanning, Paperless Fax Delivery, consolidated single-page copy/print, etc.
  - Usage restrictions/totalization functions of main unit, reduction through visualization of usage status using FUJIFILM IWpro multifunction device management
- Designed for easy reuse and recycling after usage

## Energy-saving technology

- Achieves high image quality and energy efficiency with a compact, low-power LED print head and low-temperature fusing Super EA-Eco toner
- Utilizes induction heating fusing technology for rapid heating without the need for preheating in standby or energy-saving modes, striking a balance between energy efficiency and convenience

FUJIFILM Business Innovation are committed to developing environmentally conscious products, including energy efficiency improvements and resource conservation in our multifunction devices and printers. FUJIFILM Group introduced the certification program in which we clarify the environmental value of each product by assessments at the time of product development, conduct the evaluation based on our in-house certification criteria and certify the products that are excellent in reducing environmental impact\*<sup>1</sup> as "Green Value Products". The certification criteria have been continuously updated, reflecting the latest regulatory and industry trends. This product has been certified as a "Silver Rank" product that reduces environmental impact at a higher level than the industries' standard\*<sup>2</sup>.



\*1: "Products that are excellent in reducing environmental impact" refer to products designed to reduce environmental impact throughout their life cycle, from raw material acquisition, production, distribution, use/maintenance and disposal/reuse/recycling.

\*2: This product has been certified as "Silver Rank" under the latest certification criteria at the time of sale, whereas the environmental performance of this product is equivalent to the previous model "Apeos C7070 series" certified as "Gold Rank".

# Reliable support system

## Easy solutions to resolve problems

From supplies replacement to unexpected device failures, most problems can be resolved without waiting for the service representatives or sales representatives.

1. Resolve problem using the "Help" function on the device
  - Self Help information is available on the control panel
  - Self Help information can be accessed via the mobile device by scanning the QR code displayed on the control panel
2. "Remote Assistance" with the help of operators
  - Connects directly to the Support Centre
  - An operator will remotely access the multifunction device to resolve the problem by guiding through the steps on the shared control panel



## Device Setting Backup Service

This is a service that always backs up the latest setting information to a cloud server. It allows you to be prepared for unexpected situations and use your multifunction printer with confidence.

Note: An application is required to use this service (free of charge).

## Keeping a close eye on your multifunction device on a daily basis

Connecting your multifunction printer and our EP system\* via the internet allows for automatic meter count verification, automatic delivery of consumables, daily status monitoring, and automatic notifications in the event of malfunctions. This reduces the burden on multifunction printer administrators and supports the use of our products with peace of mind.

\* The content of the services provided may vary depending on the usage region. For details, please contact one of our sales representative.



## Optional

Up to 10 sheets\* staple-free stapling is available.

Supports multi-position single and double Staple-free Stapling.







\* 80 gsm or less.




Single stapling



Double stapling

 <p><b>Staple</b> Stapling multiple pages together</p>	 <p><b>Staple-free Staple</b> Stapling multiple pages together</p>	 <p><b>Punch</b> Hole punching for binders</p>
 <p><b>Saddle Staple</b> Convenient for making catalogs and booklets</p>	 <p><b>Z-fold Half Sheet</b> Z-folds A3 documents into A4 size</p>	 <p><b>Tri-fold</b> Convenient for inserting direct mail, etc.</p>

Finisher-A2	Finisher-B5 +Booklet Maker Unit	Finisher-C4 / C5		Finisher-C4 / C5 with Booklet Maker		Finisher-C4 / C5 with Booklet Maker +Folder Unit CD3	
	B5	C4	C5	C4	C5	C4	C5
							

Stapling capacity	Staple	50 sheets <sup>*1</sup>	50 sheets	50 sheets or 65 sheets <sup>*2</sup>		50 sheets or 65 sheets <sup>*2</sup>		50 sheets <sup>*3</sup> or 65 sheets <sup>*2*3</sup>	
	Staple-free Staple	–	10 sheets <sup>*4</sup>	–	10 sheets <sup>*4</sup>	–	10 sheets <sup>*4</sup>	–	10 sheets <sup>*4</sup>
Punch		–	2/4 holes or 2/3 holes <sup>*5</sup>	–	2/4 holes or 2/3 holes <sup>*6</sup>	2/4 holes <sup>*6</sup>	2/4 holes or 2/3 holes <sup>*6</sup>	2/4 holes <sup>*6</sup>	2/4 holes or 2/3 holes <sup>*6</sup>
Saddle Staple		–	15 sheets <sup>*7</sup>	–		20 sheets		20 sheets	
Single Fold		–	● <sup>*7</sup>	–		●		●	
Tri-fold		–	–	–		–		● <sup>*8</sup>	
Z-fold Half Sheet		–	–	–		–		● <sup>*8</sup>	
Paper capacity <sup>*9</sup>	Output tray	–	–	500 sheets		500 sheets		500 sheets	
	Finisher tray	500 sheets	2,000 sheets	3,000 sheets		1,500 sheets		1,500 sheets	

Note: Finisher A2 is compatible with C5571/C4571.

\*1: A4 size. Up to 30 sheets for JIS B4 or larger.

\*2: With Finisher-C Staple Unit 65 Sheets.

\*3: When mixed with Z fold half sheet, the number of sheets is reduced.

\*4: 64 to 80 gsm paper.

\*5: Finisher-B5 requires the 2/4 Hole Punch Module or the US 2/3 Hole Punch Module.

\*6: Punching function cannot be added. Select a finisher with the hole punching function.

\*7: Booklet Maker Unit is required. Saddle Staple and Single Fold on Finisher-B5 make creases without folding.

\*8: Folder Unit CD3 is required.

\*9: 70 gsm paper. A4 size.

## Top-class security supporting DX

### Equipped with security features to address diverse security threats

As network-connected information devices, the printers are equipped with state-of-the-art security features to protect your valuable information assets from cyber-attacks and other threats.

#### Protect from unauthorised user

- User authentication and usage restrictions by user prevent unauthorised operations and access by users without permissions.
- Expansion with Secondary Ethernet\* allows a single multifunction printer to be used on a separated network, etc.

\* Optional

#### Protects Data

- Encryption of communication paths with TLS and IPsec
- Protection of scanned files and e-mails through encryption/electronic signatures
- Robust AES-256 encryption

#### Protect from unauthorised access

- Account lock function
- Restriction of accessible IP addresses
- Prevention of software tampering during multifunction printer startup and operation
- Automatic repair function upon detection of tampering at startup, etc.

#### Prevent information leaks due to operational errors

- Fixing the delivery destination of scanned documents
- Double input of fax destinations, etc.

# Apeos C7071 / C6571 / C5571 / C4571

## Functions & Specifications

### Basic Specifications / Copy Function

Item		C7071	C6571	C5571	C4571
Type		Console			
Memory Capacity		6 GB (System Memory: 4 GB, Page Memory: 2 GB, Max: 6 GB)			
Storage Device Capacity*1		256 GB			
Colour Capability		Full Colour			
Scan Resolution		600 x 600 dpi			
Printing Resolution		1,200 x 2,400 dpi (Text-Photo / Photo), 600 x 600 dpi (Text / Map)			
Warm-up Time*2		[Embedded Plug-ins / Custom Services]*3 When enabled: 30 seconds or less (23 degrees Celsius room temperature) When disabled: 24 seconds or less (23 degrees Celsius room temperature)			
Recovery Time (Recovery Time from Sleep Mode)		13 seconds or less (23 degrees Celsius room temperature)	11 seconds or less (23 degrees Celsius room temperature)		
Original Size		Maximum of A3, 11 x 17", 297 x 432 mm for both Sheet and Book			
Paper Size	Tray 1	Max: A3, 11 x 17"; Min: A5, Postcard (100 x 148 mm) Custom Size: 100 x 148 mm to 297 x 432 mm			
	Tray 2	Max: SRA3 (320 x 450 mm), 12 x 18" (305 x 457 mm), A3 Min: A5, Postcard (100 x 148 mm) Custom Size: 100 x 148 mm to 320 x 457 mm			
	Tray 3, 4	Max: A4, Letter; Min: JIS B5	[Model-CPS / Model-CPS-C (4 Tray)] Max: SRA3 (320 x 450 mm), 12 x 18" (305 x 457 mm), A3 Min: A5, Postcard (100 x 148 mm) Custom Size: 100 x 148 mm to 320 x 457 mm [Model-CPS / Model-CPS-C (Tandem Tray)] Max: A4, Letter; Min: JIS B5		
	Bypass Tray	Max: SRA3 (320 x 450 mm), 12 x 19" (305 x 483 mm), A3 Min: A5, Envelope*4, Postcard (100 x 148 mm) Custom Size: 89 x 98 mm to 320 x 483 mm			
	Image loss width*5	Lead edge 4.0 mm, Trail edge 2.0 mm, Right / Left edge 2.0 mm			
Paper Weight*6	Paper Tray	52 to 300 gsm			
	Bypass Tray	52 to 300 gsm			
First Copy Output Time	B/W*7	3.3 sec.	3.3 sec.	3.7 sec.	4.4 sec.
	Colour*8	4.1 sec.	4.1 sec.	5.2 sec.	5.7 sec.
Continuous Copy Speed*9	A4 LEF / JIS B5 LEF	B/W: 70 ppm Colour: 70 ppm	B/W: 65 ppm Colour: 65 ppm	B/W: 55 ppm Colour: 55 ppm	B/W: 45 ppm Colour: 45 ppm
	A4 / JIS B5	B/W: 50 ppm Colour: 50 ppm	B/W: 47 ppm Colour: 47 ppm	B/W: 40 ppm Colour: 40 ppm	B/W: 32 ppm Colour: 32 ppm
	JIS B4	B/W: 41 ppm Colour: 41 ppm	B/W: 38 ppm Colour: 38 ppm	B/W: 32 ppm Colour: 32 ppm	B/W: 26 ppm Colour: 26 ppm
	A3	B/W: 35 ppm Colour: 35 ppm	B/W: 32 ppm Colour: 32 ppm	B/W: 27 ppm Colour: 27 ppm	B/W: 22 ppm Colour: 22 ppm
	Standard	520 sheets x 2-tray + 840 sheets + 1,230 sheets + Bypass Tray 90 sheets [Model-CPS / Model-CPS-C (4 Tray)] 520 sheets x 4-tray + Bypass Tray 90 sheets [Model-CPS / Model-CPS-C (Tandem Tray)] 520 sheets x 2-tray + 840 sheets + 1,230 sheets + Bypass Tray 90 sheets			
Paper Tray Capacity*10	Optional	High Capacity Feeder B1: 2,000 sheets			
	Max	5,200 sheets (Standard + High Capacity Feeder B1) [Model-CPS / Model-CPS-C (4 Tray)] 4,170 sheets : (Standard + High Capacity Feeder B1) [Model-CPS / Model-CPS-C (Tandem Tray)] 5,200 sheets : (Standard + High Capacity Feeder B1)			
Output Tray Capacity*11		Upper Center: 250 sheets (A4 LEF), Lower Center: 250 sheets (A4 LEF)			
Power Supply		AC220-240 V +/- 10 %, 10 A, 50/60 Hz common			
Maximum Power Consumption		2.2 kW (AC220 V +/- 10 %) 2.4 kW (AC240 V +/- 10 %) Sleep mode: 0.5 W (AC230 V) Ready mode: 106 W (AC230 V)		2.2 kW (AC220 V +/- 10 %) 2.4 kW (AC240 V +/- 10 %) Sleep mode: 0.5 W (AC230 V) Ready mode: 90 W (AC230 V)	
Dimensions		W 658 x D 790 x H 1,169 mm [Model-CPS(4 Tray / Tandem Tray)] W 658 x D 720 x H 1,119 mm [Model-CPS-C (4 Tray / Tandem Tray)] W 658 x D 790 x H 1,169 mm			
Weight*12		[Model-CPS (4 Tray)] 129 kg [Model-CPS-C (4 Tray)] 146 kg [Model-CPS (Tandem Tray)] 136 kg [Model-CPS-C (Tandem Tray)] 156 kg			

\*1: Storage Device Capacity is not totally available for customers.

\*2: It may change depending on usage conditions.

\*3: Embedded Plug-ins / Custom Services are enabled as factory default.

\*4: Supported standard envelope sizes are Commercial#10, Monarch7 3/4, and DL, etc.

\*5: Up to A3 size.

\*6: It is recommended to use our recommended paper. Correct print output may not be possible depending on the requirement.

\*7: A4 LEF / Monochrome priority mode.

\*8: A4 LEF / Colour priority mode.

\*9: The speed may be reduced due to the image quality adjustment.

\*10: 80 gsm paper.

\*11: 70 gsm paper.

\*12: Excluding Toner Cartridge.

### Fax Function (Optional)

Item	Description
Original Size	Max: A3, 11 x 17", Long document (Longest 600 mm*1)
Recording Paper Size	Max: A3, 11 x 17"; Min: A5
Transmission Time	2 seconds and more but fewer than 3 seconds*2
Transmission Mode	ITU-T G3
Applicable Lines	Telephone subscriber line, PBX, Fax communication (PSTN), Maximum 3 ports*3 (G3-3 ports)

\*1: When Duplex Automatic Document Feeder is used.

\*2: When A4 size document with approximately 700 characters is transmitted in standard image-quality (8 x 3.85 lines/mm) and in high-speed mode (28.8 kbps or faster, JBIG). Only indicates the time for transmitting the image information and does not include the communication control time. The total communication time will vary depending on the contents of the document, the type of machine receiving the fax, and line condition.

\*3: No. of FAX lines is up to 3 ports. Port refers to number of channels for FAX.

### Print Function

Item	Description	
Type	Built-in type	
Print Size	Tray 1	Same as the Basic Specifications / Copy Function
	Tray 2	Same as the Basic Specifications / Copy Function
	Tray 3,4	Same as the Basic Specifications / Copy Function
	Bypass Tray	Max: SRA3 (320 x 450 mm), 12 x 19" (305 x 483 mm), A3 Min: A5, Envelope*1, Postcard (100 x 148 mm) Custom Size: 89 x 98 mm to 320 x 1,200 mm*2
	Image loss width*3	Lead edge 4.0 mm, Trail edge 2.0 mm, Right / Left edge 2.0 mm
Continuous Print Speed*4		Same as the Basic Specifications / Copy Function
Printing Resolution	Standard	[PCL Driver] Standard: 1,200 x 2,400 dpi, High Quality: 1,200 x 2,400 dpi, High Resolution: 1,200 x 1,200 dpi
	Optional	[Adobe® PostScript® 3™ Driver] High Speed (Standard): 600 x 600 dpi, High Quality: 1,200 x 2,400 dpi, High Resolution: 1,200 x 1,200 dpi
Page Description Language	Standard	PCL5 / PCL6
	Optional	Adobe® PostScript® 3™
Supported Operating System*5	Standard	[PCL Driver] Windows 11 (64 bit), Windows 10 (32/64 bit), Windows Server 2025 (64 bit), Windows Server 2022 (64 bit), Windows Server 2019 (64 bit), Windows Server 2016 (64 bit), [Mac OS X Driver] macOS 15 / 14 / 13 / 12 / 11
	Optional	[Adobe® PostScript® 3™ Driver] Windows 11 (64 bit), Windows 10 (32/64 bit), Windows Server 2025 (64 bit), Windows Server 2022 (64 bit), Windows Server 2019 (64 bit), Windows Server 2016 (64 bit) macOS 15 / 14 / 13 / 12 / 11
Interface	Standard	Ethernet 1000BASE-T / 100BASE-TX / 10BASE-T, USB3.0
	Optional	Wireless LAN (IEEE 802.11a / b / g / n / ac)

\*1: Supported standard envelope sizes are Commercial#10, Monarch7 3/4, and DL, etc.

\*2: Long paper of 106 to 220 gsm (Extra Heavyweight) is available. The printed papers are delivered to the Side Tray when Finisher-A2 / Finisher-C4 / Finisher-C5 / Finisher-C4 with Booklet Maker / Finisher-C5 with Booklet Maker is attached.

\*3: Up to A3 size.

\*4: The speed may be reduced due to the image quality adjustment. The printing speed may be reduced depending on the document.

\*5: Please refer to our official website for the latest supported OS.

### Scan Function

Item	Description	
Type	Colour Scanner	
Scan Resolution	600 x 600 dpi, 400 x 400 dpi, 300 x 300 dpi, 200 x 200 dpi	
Scan Speed	Same as the Scan Speed for the Duplex Automatic Document Feeder	
Interface	Standard	Ethernet 1000BASE-T / 100BASE-TX / 10BASE-T
	Optional	Wireless LAN (IEEE 802.11a / b / g / n / ac)

### Duplex Automatic Document Feeder B2-PC

Item	C5571	C4571
Original Size*1 / Paper Weight	Max: A3, 11 x 17"; Min: A6 38 to 128 gsm (In Duplex: 50 to 128 gsm)*2	
Capacity*3	130 sheets	
Scan Speed*4	Copy (A4 LEF, Simplex)	B/W: 55 ppm Colour: 55 ppm
	Scan	B/W: 80 ppm, Colour: 80 ppm (1 pass, 2 sided scanning: B/W 160 ppm, Colour 160 ppm) [Standard Document (A4 LEF), 200 dpi, to Folder]

\*1: Custom Size is 49 x 85 mm to 297 x 432 mm.

\*2: Custom Sizes from 49 x 85 mm to 55 x 91 mm are available from 38 to 209 gsm.

\*3: 70 gsm paper.

\*4: The scanning speed varies depending on the documents.

### Duplex Automatic Document Feeder C2-PC

Item	C7071	C6571	C5571	C4571
Original Size*1 / Paper Weight	Max: A3, 11 x 17"; Min: A6 38 to 200 gsm (In Duplex: 50 to 200 gsm)			
Capacity*2	250 sheets			
Scan Speed*3	Copy (A4 LEF, Simplex)	B/W: 70 ppm Colour: 70 ppm	B/W: 65 ppm Colour: 65 ppm	B/W: 55 ppm Colour: 55 ppm
	Scan	B/W: 135 ppm, Colour: 135 ppm (1 pass, 2 sided scanning: B/W 270 ppm, Colour 270 ppm) [Standard Document (A4 LEF), 200 dpi, to Folder]		

\*1: Custom Size is 84 x 140 mm to 297 x 432 mm.

\*2: 70 gsm paper.

\*3: The scanning speed varies depending on the documents.

### High Capacity Feeder B1 (Optional)

Item	Description
Paper Size / Paper Weight	A4 LEF, Letter LEF, JIS B5 LEF, 55 to 216 gsm
Feeding Capacity / Number of Tray*	2,000 sheets x 1-tray
Dimensions	W 389 x D 610 x H 377 mm
Weight	29 kg

\* 80 gsm paper.

### Envelope Tray (Optional)

Item	Description
Paper Size	DL LEF, ISO-C4, ISO-C5 LEF, ISO-C6 LEF, Commercial #10 LEF, Monarch 7 3/4 LEF Custom size: 90 x 98 mm to 241 x 372 mm
Paper Weight	Envelope: 75 to 90 gsm, Postcard: 106 to 220 gsm
Feeding Capacity / Number of Tray*	50 sheets x 1-tray
Dimensions	W 620 x D 566 x H 87 mm
Weight	3 kg

\* Commercial #10 paper.

## Side Tray

Item	Description
Paper Capacity*	100 sheets

\* 70 gsm paper.

## Exit 2 Tray

Item	Description
Paper Size / Paper Weight	Same as the Basic Specifications / Copy Function
Paper Capacity* <sup>1</sup>	250 sheets* <sup>2</sup>
Type	Stack

\*1: 70 gsm paper.

\*2: When installing Exit 2 Tray, the Center Tray capacity is 250 sheets.

## Finisher-A2 (Optional)

Item	Description
Type	Finishing Tray Sort (Offset available* <sup>1</sup> ) / Stack (Offset available* <sup>1</sup> )
Paper Size	Finishing Tray Max: A3, 11 x 17"; Min: A6, Postcard (100 x 148 mm) Custom Size: 89 x 98 mm to 297 x 432 mm
Paper Weight* <sup>2</sup>	Finishing Tray 52 to 256 gsm
Paper Capacity* <sup>3</sup>	Finishing Tray [Without Stapling] A4 LEF: 500 sheets, JIS B4: 250 sheets, A3 or larger: 200 sheets, Mixed Size Stacking* <sup>4</sup> : 250 sheets [With Stapling] 30 sets, or A4 LEF: 500 sheets, JIS B4: 250 sheets, A3 or larger: 200 sheets, Mixed Size Stacking* <sup>4</sup> : 250 sheets
Staple	Capacity A4: 50 sheets (90 gsm or less), JIS B4 or larger: 30 sheets (90 gsm or less)
	Paper Size Max: A3, 11 x 17"; Min: JIS B5 LEF Custom Size: 203 x 182 mm to 297 x 432 mm
	Paper Weight 52 to 256 gsm
	Position Single stapling, Dual stapling
Dimensions / Weight	W 478 x D 461 x H 238 mm, 11 kg

Note: The unit cannot be installed on C7071 / C6571.

\*1: [No Offset] is selected by factory default. Outputs less than 190 mm width are delivered without offset stacking.

\*2: Documents may not be printed correctly depending on usage conditions. (52 to 55 gsm)

\*3: 70 gsm paper.

\*4: When larger size sheets are stacked on top of smaller size sheets: 250 sheets (when large size sheets are smaller than A3) / 200 sheets (when large size sheets are A3 or larger)

## Finisher-B5 (Optional)

Item	Description
Type	Center Tray Sort (Offset available* <sup>1</sup> ) / Stack (Offset available* <sup>1</sup> ) Finishing Tray Sort (Offset available* <sup>2*3</sup> ) / Stack (Offset available* <sup>2*3</sup> )
Paper Size* <sup>4</sup>	Center Tray Max: SRA3 (320 x 450 mm), 12 x 19" (305 x 483 mm), A3 Min: A6, Postcard (100 x 148 mm) Custom Size: 89 x 98 mm to 320 x 483 mm Finishing Tray Max: A3, 11 x 17"; Min: A5 Custom Size: 148 x 148 mm to 297 x 432 mm
Paper Weight* <sup>5</sup>	Center Tray 52 to 300 gsm Finishing Tray 52 to 300 gsm
Paper Capacity* <sup>6</sup>	Center Tray 200 sheets Finishing Tray [Without Stapling] A4: 2,000 sheets, JIS B4 or larger: 1,000 sheets, Mixed Size Stacking* <sup>1</sup> : 300 sheets [With Stapling] A4: 100 sets or 1,000 sheets* <sup>8</sup> , JIS B4 or larger: 75 sets or 750 sheets [With Booklet Finishing* <sup>9</sup> ] 50 sets or 600 sheets [With Fold* <sup>9</sup> ] 500 sheets
Staple	Capacity Staple: 50 sheets (90 gsm or less) Staple-free Staple* <sup>10</sup> : 10 sheets (80 gsm or less)
	Paper Size Max: A3, 11 x 17"; Min: A5 LEF Custom Size: 210 x 148 mm to 297 x 432 mm
	Paper Weight Staple: 52 to 256 gsm Staple-free Staple* <sup>10</sup> : 64 to 105 gsm
	Position Single stapling, Dual stapling
Punch* <sup>11</sup>	Paper Size* <sup>12</sup> Max: A3, 11 x 17"; Min: A5 LEF Custom Size: 148 x 148 mm to 297 x 432 mm Paper Weight 52 to 220 gsm Number of Holes 2-hole / 4-hole punch or 2-hole / 3-hole punch (US Specifications)
Booklet Finishing* <sup>9</sup>	Paper Size Max: A3, 11 x 17"; Min: A4, Letter Custom Size: 210 x 279 mm to 297 x 432 mm Capacity Saddle Staple: 15 sheets; Single Fold: 5 sheets Paper Weight Saddle Staple: 64 to 80 gsm* <sup>13</sup> , Single Fold: 64 to 105 gsm
Dimensions* <sup>14</sup>	W 592 x D 653 x H 1,041 mm, With Booklet Maker Unit: W 592 x D 673 x H 1,076 mm
Weight	28 kg Punch Module: + 2 kg, Booklet Maker Unit: + 10 kg

\*1: Paper is output without offset stacking if the width is greater than 279 mm or the length is greater than 432 mm.

\*2: The offset feature is set to disabled by factory default.

\*3: Outputs whose weight is 257 gsm and more or width is less than 210 mm are delivered without offset stacking.

\*4: Paper in the sizes larger than A3 or 11 x 17" or smaller than A5 are delivered to the Centre Tray.

\*5: Documents may not be printed correctly depending on usage conditions. (52 to 55 gsm, 257 gsm and more)

\*6: 70 gsm paper.

\*7: When larger size sheets are stacked on top of smaller size sheets.

\*8: 75 sets or 750 sheets with dual stapling.

\*9: The Booklet Finishing function requires the optional Booklet Maker Unit for Finisher-B. Make a crease allows you to fold easily. After a job with the Booklet Finishing function specified has been output, the next job may not be delivered until the sheets are removed from the output tray. Also, if larger size sheets are stacked on top of smaller size sheets after a job with the Booklet Finishing function specified has been run, the next job may not be delivered until the sheets are removed from the output tray.

\*10: Staple-free stapling does not have binding force equal to stapled stapling. Bound part may be easily separated depending on the paper, temperature, humidity, and how the page is turned over.

\*11: The Punch function requires the optional 2/4 Hole Punch Module for Finisher-B or US 2/3 Hole Punch Module for Finisher-B.

\*12: Available number of punch holes varies depending on the paper size.

\*13: Covers can be up to 220 gsm (Extra Heavyweight).

\*14: Inner connector within the body is excluded.

## Finisher-C4 / C5, Finisher-C4 / C5 with Booklet Maker (Optional)

Item	Finisher-C4	Finisher-C5	Finisher-C4 with Booklet Maker	Finisher-C5 with Booklet Maker
Type	Center Tray Sort (Offset available) / Stack (Offset available) Output Tray Sort (Offset available) / Stack (Offset available) Finishing Tray Sort (Offset available) / Stack (Offset available) Booklet Tray - Sort / Stack			
Paper Size	Center Tray Max: SRA3 (320 x 450 mm), 12 x 18" (305 x 457 mm), A3; Min: A5, Postcard (100 x 148 mm) Custom Size: 89 x 98 mm to 320 x 483 mm Output Tray Max: SRA3 (320 x 450 mm), 12 x 19" (305 x 483 mm), A3; Min: A6, Postcard (100 x 148 mm) Custom Size: 98 x 148 mm to 320 x 488 mm Finishing Tray Max: SRA3 (320 x 450 mm), 12 x 19" (305 x 483 mm), A3; Min: A5 LEF Custom Size: 203 x 148 mm to 320 x 488 mm			
Paper Weight	Center Tray 52 to 300 gsm Output Tray 52 to 300 gsm* <sup>1</sup> Finishing Tray 52 to 300 gsm* <sup>1</sup>			
Paper Capacity* <sup>2</sup>	Center Tray 200 sheets Output Tray 500 sheets (A4) Finishing Tray [Without Stapling] A4: 3,000 sheets, JIS B4 or larger: 1,500 sheets, A5 LEF: 1,000 sheets, Mixed Size Stacking* <sup>3</sup> : 300 sheets [With Stapling] A4: 200 sets or 3,000 sheets JIS B4 or larger: 100 sets or 1,500 sheets A5 LEF: 100 sets or 1,000 sheets Mixed Size Stacking* <sup>3</sup> : 70 sets or 200 sheets Booklet Tray - 20 sets* <sup>4</sup>			[Without Stapling] A4: 1,500 sheets, JIS B4 or larger: 1,500 sheets, A5 LEF: 1,000 sheets, Mixed Size Stacking* <sup>3</sup> : 300 sheets [With Stapling] A4: 200 sets or 1,500 sheets JIS B4 or larger: 100 sets or 1,500 sheets A5 LEF: 100 sets or 1,000 sheets Mixed Size Stacking* <sup>3</sup> : 70 sets or 200 sheets
Staple	Capacity Staple: 50 sheets (90 gsm or less)* <sup>5</sup> , Staple-free Staple* <sup>6*7</sup> : 10 sheets (80 gsm or less) Paper Size* <sup>8</sup> Max: A3, 11 x 17"; Min: A5 LEF Custom Size: 203 x 148 mm to 297 x 432 mm Paper Weight Staple: 52 to 300 gsm, Staple-free Staple* <sup>6*7</sup> : 64 to 105 gsm Position Single stapling, Dual stapling Paper Size* <sup>10</sup> Max: A3, 11 x 17"; Min: A5 LEF Custom Size: 203 x 148 mm to 297 x 432 mm Paper Weight 52 to 220 gsm			
Punch* <sup>9</sup>	Number of Holes -	2-hole / 4-hole punch or 2-hole / 3-hole punch (US Specifications)	2-hole / 4-hole punch	2-hole / 4-hole punch or 2-hole / 3-hole punch (US Specifications)
Booklet Finishing	Paper Size - Capacity* <sup>11</sup> - Paper Weight -			Max: SRA3 (320 x 450 mm), 12 x 18" (305 x 457 mm), A3; Min: JIS B5 Custom Size: 182 x 257 mm to 320 x 457 mm Saddle Staple: 20 sheets (90 gsm or less) Single Fold: 5 sheets (90 gsm or less) Saddle Staple: 60 to 300 gsm Single Fold: 60 to 300 gsm
Dimensions* <sup>12</sup>	W 644 x D 692 x H 1,054 mm When Folder Unit CD3 is installed: W 883 x D 692 x H 1,054 mm			W 649 x D 692 x H 1,054 mm When Folder Unit CD3 is installed: W 888 x D 692 x H 1,054 mm
Weight	Finisher-C4 (w/o Punch): 41 kg Finisher-C5 (w Punch): 49 kg Folder Unit CD3: + 52 kg			Finisher-C4 with Booklet Maker (w/o Punch): 54 kg Finisher-C4 with Booklet Maker (w Punch): 57 kg Finisher-C5 with Booklet Maker (w Punch): 61 kg Folder Unit CD3: + 52 kg

Note: Only stapled stapling is available with Finisher-C4 and Finisher-C4 with Booklet Maker. You cannot add staple-free stapling function.

Note: Both stapled stapling and staple-free stapling are available with Finisher-C5 and Finisher-C5 with Booklet Maker.

Note: Transport Unit is required.

\*1: 52 to 55 gsm output paper may not be aligned properly depending on the paper type.

\*2: 70 gsm paper.

\*3: When larger size sheets are stacked on top of smaller size sheets.

\*4: When the output paper size is the same.

\*5: Up to 65 sheets can be stapled when the Finisher-C Staple Unit 65 Sheets is installed. However, depending on the paper type, incorrect stapling such as uneven edge alignment of sets may occur.

\*6: Staple-free stapling is available with Finisher-C5 and Finisher-C5 with Booklet Maker.

\*7: Staple-free stapling does not have binding force equal to stapled stapling. Bound part may be easily separated depending on the paper, temperature, humidity, and how the page is turned over.

\*8: Available staple positions vary depending on the paper size.

\*9: Punching function cannot be added. Select a finisher with the hole punching function.

\*10: Available number of punch holes varies depending on the paper size.

\*11: The maximum number of sheets varies depending on the paper weight. Booklet may not be tightly closed depending on the size or type of the paper.

\*12: When the Extension Tray is pulled out.

## Folder Unit CD3 (Optional)

Item	Description
Z Fold	Paper Size A3, 11 x 17", JIS B4
Half Sheet	Paper Weight 60 to 90 gsm
Tri-fold	Paper Size A4 SEF, Letter SEF
	Paper Weight 60 to 90 gsm
	Paper Capacity* <sup>1</sup> 40 sheets
Power Supply* <sup>2</sup> / Maximum Power Consumption	AC220-240 V +/- 10 %, 0.6 A, 50/60 Hz common, 144 W
Dimensions	W 232 x D 588 x H 991 mm
Weight	52 kg

Note: Optional of Finisher-C4 / Finisher-C5 / Finisher-C4 with Booklet Maker / Finisher-C5 with Booklet Maker.

\*1: 70 gsm paper.

\*2: Power supply separate from the main unit is required.

## Notes

- 1) If the storage media of the base unit fail, loss of received data, accumulated data, registered setting data, etc. may occur. In no event shall "the company" be liable for any damages whatsoever arising from loss of data.
- 2) Functional spare parts will be available for at least 7 years after the product is no longer manufactured.

# Enhanced basic functions

## Copy

- Output Color
- Paper Supply
- Reduce/Enlarge
- Slight Reduction
- Auto 2 Sided Output
- Pages per Side (2 Pages / 4 Pages / 8 Pages)
- Copy Output (uncollated/collated)
- Single Color / Dual Color Copy
- Copy (ID Card)
- Mixed Size Originals
- Original Size
- Image Enhancement
- Book Copying
- Edge Erase
- Image Shift
- Mirror Image / Negative Image
- Image Rotation
- Booklet Creation
- Multiple-Up x Booklet Creation
- 2 Sided Book Copying
- Covers
- Poster
- Repeat Image
- Preset Repeat Image
- Annotations
- Watermark (optional)
- Combined Job
- Sample Job
- Delete Outside / Delete Inside
- Staple / Staple-free Staple / Punch / Folding / Saddle Staple (optional)

## Print

- PCL
- Adobe® PostScript® 3™ (optional)
- Multi-Model Print Driver 2
- Microsoft Universal Print
- Secure Print
- Sample Set
- Delayed Print
- Print from Folder
- Form Registration
- Multiple-Up
- Booklet Creation
- Multiple-Up x Booklet Creation
- Poster
- Covers / Separators
- Long paper printing
- Envelope printing
- Private Charge Print
- Charge Print
- Print from USB (optional)
- Staple / Staple-free Staple / Punch / Folding / Saddle Staple (optional)
- Server-less On-Demand Print (optional)

## Fax (Optional)

- G3 x maximum 3 ports (optional)
- Internet Fax
- SIP Fax (optional)
- Send Direct Fax
- Address Book (maximum 5,000 entries)
- Broadcast Transmission / Group Transmission
- Redial / Resend Unsent Documents
- Rotate 90 Degrees
- Preview
- 2 Sided Scanning
- Resolution
- Lighten / Darken
- Original Type
- Mixed Size Originals
- Transmission Header
- Priority Send / Delay Start
- Cover Page
- Remote Folder
- Transmission Report
- Activity Report
- Re-enter Recipient
- Prevents Unsolicited Faxes
- Prohibit Direct Fax
- Receive Paperless Fax
- Simple Image Log Support
- Paperless Fax Delivery (optional)

## Scan

- Scan to Folder (TWAIN driver/Web browser)
  - Transfer via SMB/FTP
  - Email
  - Scan (URL)
  - Scan to USB (optional)
  - Simultaneous transmission such as Email / Transfer via SMB, etc.
  - ScanAuto
  - Preview
  - Color Scanning
  - 2 Sided Scanning
  - Mixed Size Originals
  - File Format: TIFF / JPEG / PDF<sup>\*1</sup> / XDW(DocuWorks)<sup>\*2</sup>
  - Microsoft Excel/Word format(optional)
  - Single File for Each Page
  - Searchable Text (optional)
  - High Compression (High Speed) (optional)
  - Background Suppression
  - Shadow Suppression
  - Auto Upright Orientation
  - Skew Correction
  - Skip Blank Pages
  - Book Scanning
  - Job Flow Sheets
  - Scan Delivery (optional)
  - Scan Delivery Light (optional)
- <sup>\*1</sup>: High Compression / Specific Color / Searchable Text / Security / Signature / Optimise For Quick Web View
- <sup>\*2</sup>: High Compression / Specific Color / Searchable Text / Security / Signature

## Others

- Local Authentication
  - Remote Authentication
  - Microsoft Entra ID\* linked authentication (optional)
  - IC Card Log In (optional)
  - Serverless Authentication (optional)
  - Secondary Ethernet (optional)
  - Wi-Fi Support (optional)
  - Data Encryption
  - Secure Watermark (optional)
  - Image Log (optional)
  - Message screen from an administrator
  - Job History Export
- \* Formerly Azure Active Directory

Note: Additional options may be required depending on the model.

# FUJIFILM

**FUJIFILM Business Innovation Singapore Pte. Ltd.**

20E Pasir Panjang Road #02-21A Mapletree Business City Singapore 117439  
Tel.+65-6766-8888

**fujifilm.com/fbsg**

FUJIFILM Business Innovation aims to address environmental issues through climate change mitigation and resource circulation efforts.  
The available model varies depending on the country/region. Please ask the sales representatives for details.  
The product specifications, appearance and other details in this brochure are subject to change without notice for improvements.

**Reproduction Prohibitions** Please note that reproduction of the following is prohibited by law : •Domestic and foreign currencies, government-issued securities, and national bonds and local bond certificates. •Unused postage stamps, post cards, etc. •Certificate stamps stipulated by law. •Reproducing works forming the subject matter of copyright (literary works, musical works, paintings, engravings, maps, cinematographic works, drawings, photographic works, etc.) is not permitted unless the reproduction is for the purpose of personal use, family use or other similar uses within a limited circle.

**Trademarks** •FUJIFILM, FUJIFILM logo and FUJIFILM iWpro are registered trademarks or trademarks of FUJIFILM Corporation. •Apeos, Smart WelcomEyes and DocuWorks are registered trademarks or trademarks of FUJIFILM Business Innovation Corp.

•Microsoft, Active Directory, Azure, Microsoft Entra, Microsoft Edge, Excel, OneDrive, PowerPoint, SharePoint, Microsoft Teams, Windows, and Windows Server are registered trademarks of US Microsoft Corporation in the U.S. and other countries. •Apple, Mac, macOS, OS X, AirPrint, and AirPrint logo are trademarks of Apple Inc. registered in the U.S. and other countries and regions. •Adobe, Adobe logo, PostScript, and PostScript logo are either registered trademarks or trademarks of Adobe in the United States and/or other countries. •Mopria, the Mopria Logo, and the Mopria Alliance word mark and logo are registered and/or unregistered trademarks and service marks of Mopria Alliance, Inc. in the United States and other countries. •QR Code is a registered trademark of DENSO WAVE INCORPORATED. •All product names and company names mentioned in this brochure are trademarks or registered trademarks of their respective companies.



### For Your Safety

Before using the product, read the Instruction Manual carefully for proper use. Use the product with the power source and voltage specified. Be sure to establish ground connection. Otherwise, electronic shock may result in the case of a failure or short circuit.

The information is as of February, 2025. PIC-0242 SG (2410-R1)